

HEPA filters **MS series** with **MDF-frame**

description

EMW MS filters are, due to their inexpensive frames, a reasonably priced alternative to filters with metal frames. All filters are inspected before delivery. The pleated filters are offered in all common dimensions. High quality, wet laid glass fiber media is used for the filters.

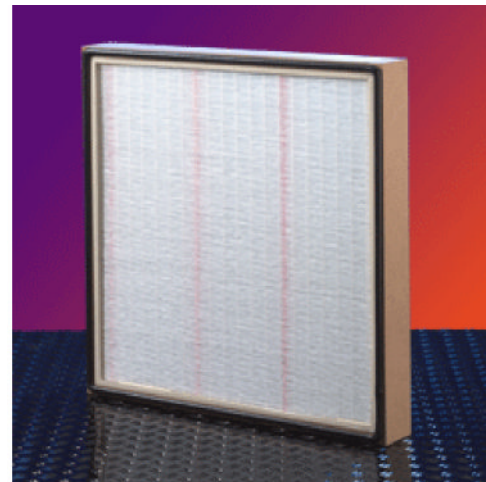
characteristics

- filter classes F6 - F9 according to DIN EN 779
- filter classes H10 - H14 according to DIN EN 1822
- max. operating temperature up to 80 °C
- leakage free casting of filter media inside frame
- MDF-frame fully incinerable
- other frame materials i.e. plastic, stainless steel available on request
- standard including one side endless foamed sealin⁹

fields of application

- laboratories
- air handling units
- processing air in the pharmaceutical industry
- air conditioning units for production halls
- individual offtake for work benches

Filters of the type MS are also available as fine filters on request.



Standards

M578 :depth of frame 78 mm
M5150 :depth of frame 150mm
M5292 : depth of frame 292 mm

Various offered dimensions of frames kindly see under technical data.

Further dimensions you will receive on request

HEPA filters **RS series** with **Aluminum Frame**

description

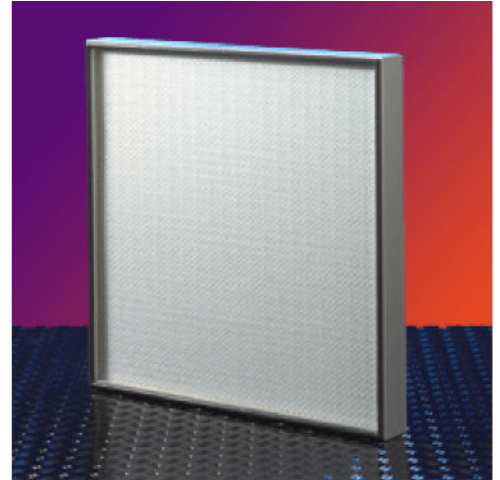
EMW RS Filters meet all demands of a HEPA filter. All filters are inspected before delivery. The pleated media in the aluminum frame is offered in all common dimensions. High quality, wet laid glass fiber media is used for the filters. To make the filters leak-proof the filter packages are cast into the frame material.

characteristics

- filter classes H10 - H14 according to DIN EN 1822
- absolute stability at 100% relative humidity
- max. operating temperature up to 80 °C
- leakage free casting of filter media inside frame
- frame made of anodised aluminum profiles
- standard including one side endless foamed sealing
- standard including both sides powder coated grid

fields of application

- air handling units
- laboratories
- clean room work benches
- processing air in the pharmaceutical industry
- air conditioning units for production halls



dimensions

R.S 66 :depth of frame 66 mm
R.S 90 :depth of frame 90 mm
R.S 117:depth of frame 117mm

Various offered dimensions of frames kindly see under [technical data](#)

Further dimensions you will receive on request