



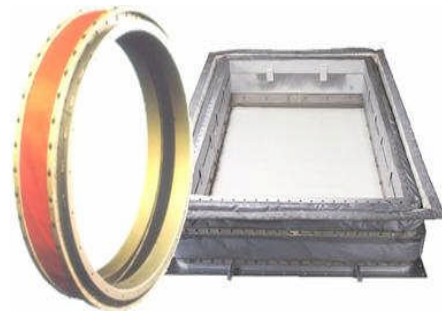
quality . experience . service

**Wing/Cowl/
Plenum/
Expansion Joint**

Wing/Cowl/Plenum/Expansion Joint

DRB Industries and its partner company offer the **“OEM’s Recommended Choice”**...for Exhaust System **Wing/ Cowl/ Plenums & Expansion Joints**. These “State of the Art” systems are designed to dramatically reduce External Heat Transfer. Designed with a newer Cooler Flange Shell Design the External Flanges are isolated from heat, making your whole exhaust area safer/easier to operate & maintain.

Comes in a variety of liner systems (Free-Floating Liner System most common). ***This dramatically reduces Skin Temperature by more than 1/2 of the older versions. Our expert crews can install your system in just a few weeks to meet your outage schedule.***



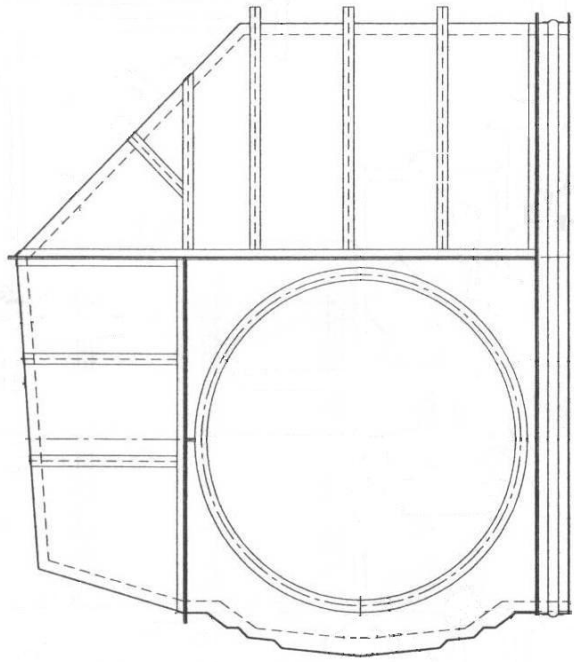
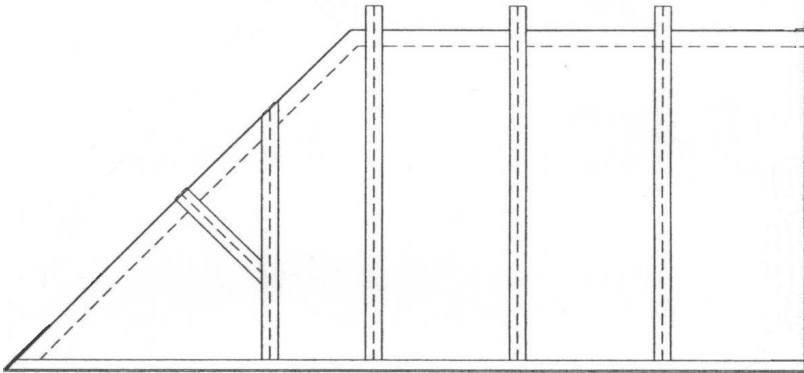
**ASK ABOUT OUR
EXPERT INSTALLATION SERVICES**



DRB Industries LLC
3104 South Elm Place, Suite I Broken Arrow, OK 74012
Phone: 918.286.7176 Fax: 918.286.7215 www.drbindustries.com

Features & Benefits

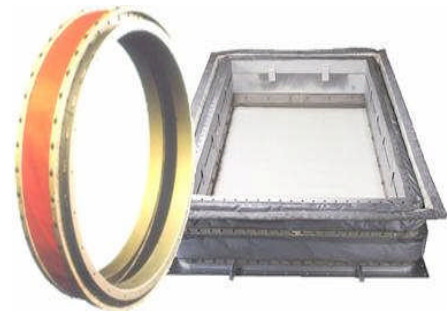
- Colder Shell & Flange Design (Reduced Metal on Metal Contact)
- Heat Transfer at a minimum
- Insulated Design with External & Skin Temperature Reduction
- Thicker Internal Insulation – located between scallop bars
- External Duct Stiffener Design
- Floor Liner (drains) standard & most models can be installed with the Diffuser & Turbine Shaft in place



Available in Most Major OEM Frame Size Turbine Exhaust Models
(Right Hand, Left Hand & Vertical Types)

EXPANSION JOINTS

Our Expansion Joints come in different sizes & Flex Material Fabrics to include a variety of Insulation & Liner Materials to meet the most challenging of environments—Available in both Freestanding & Integrated (assembled in the field) Expansion Joints.



Contact us for a Quotation.
Our Field Service Engineers can visit your site & specify a solution for you.



3104 South Elm Place, Suite I
Broken Arrow, OK 74012
Phone: 918.286.7176
Fax: 918.286.7215
sales@drbindustries.com
www.drbindustries.com

Contact us for a quote

