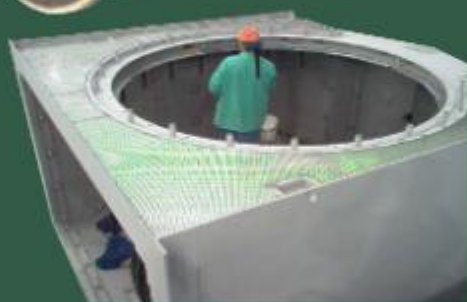
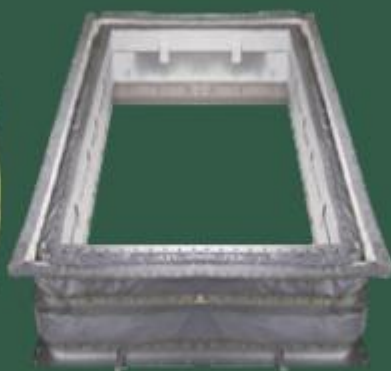


# RETROFIT EXHAUST SYSTEMS



**WING  
COWL  
PLENUMS  
EXPANSION JOINTS**



# EXHAUST PLENUM DESIGN & FEATURES

## FLOATING METAL LINER

- Secured, not fastened, atop insulation, compressed to an optimum density between the outer shell plate and liner plate
- "Floating" eliminates stresses in the liner

## EXTERNAL CASING PLATE

- Gas-tight
- Maintained at temperatures only slightly above ambient, eliminating thermal expansion problems

## NEW COOLER FLANGE DESIGN

Improvements in flange design in the following joints have dramatically reduced temperatures:

- Plenum to Cowl
- Plenum to Wing (Sidewall)
- Plenum to Wing (Floor)
- Plenum to Expansion Joint
- Wing to Cowl
- Cowl to Expansion Joint

## SCALLOP BARS

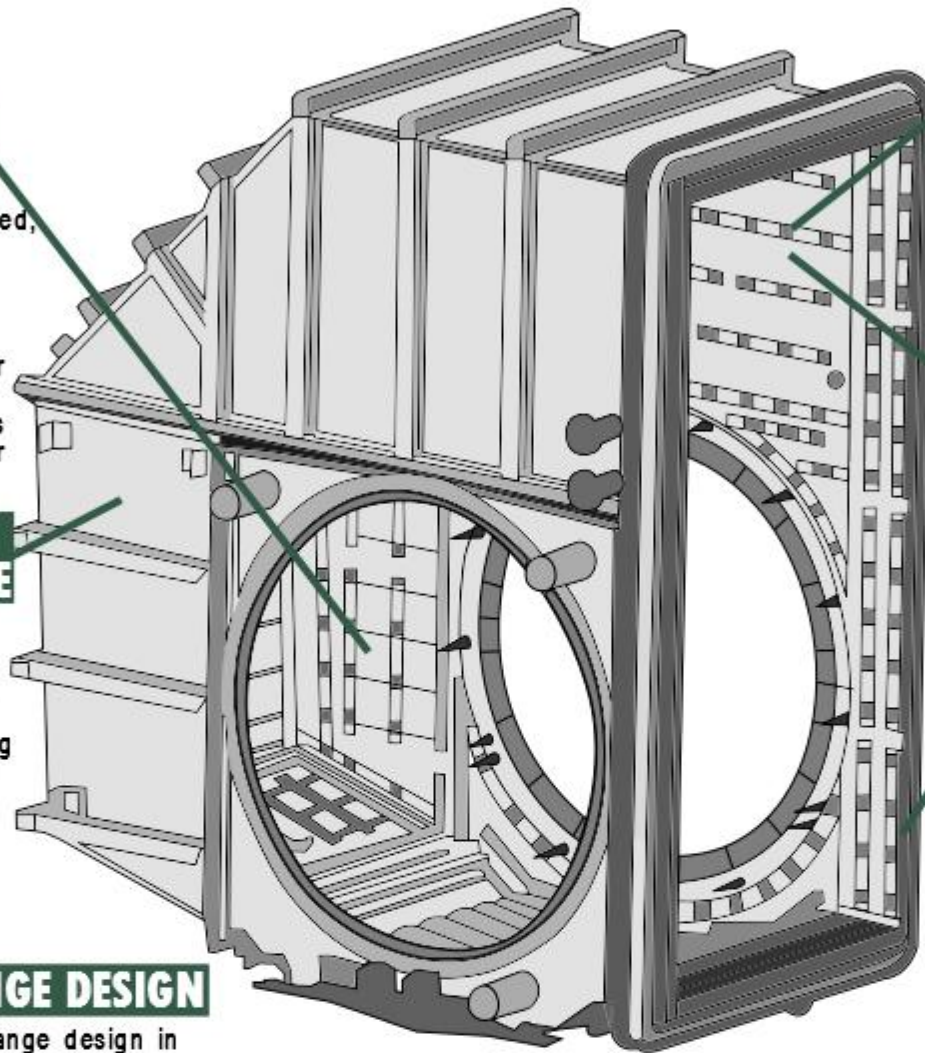
- Holds Liner Sheets in place
- Reduces Heat Transfer to the Outer Shell

## SECURED LINER SHEETS

- Expand and contract without great stress and strain
- "Scaled" installation keeps flow from getting underneath the liner sheets

## EXPANSION JOINT

- Different sizes and Flex Material fabrics available for the most challenging of environments
- Freestanding & Integrated Expansion Joints available



## SPECIFICATIONS

EXTERIOR CASING PLATE -  
Minimum of 1/4" thick ASTM A36  
Carbon Steel

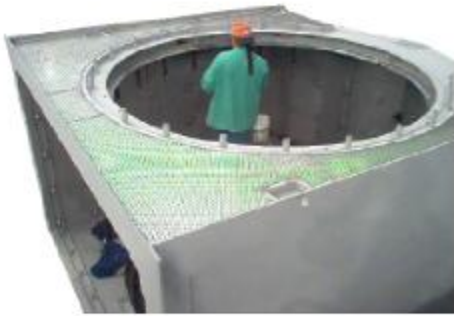
INTERIOR LINER MATERIAL -  
ASTM 240 Type 409 Stainless  
Steel

CERAMIC FIBER INSULATION -  
Internal Thickness

REPLACEMENT FLEX SEALS AND  
RADIATION TUBES - Standard

**Dramatically reducing external heat transfer makes your maintenance easier, your Exhaust System safer, and your plant more efficient**

# RETROFIT SOLUTIONS FOR ALL PLENUM SIZES



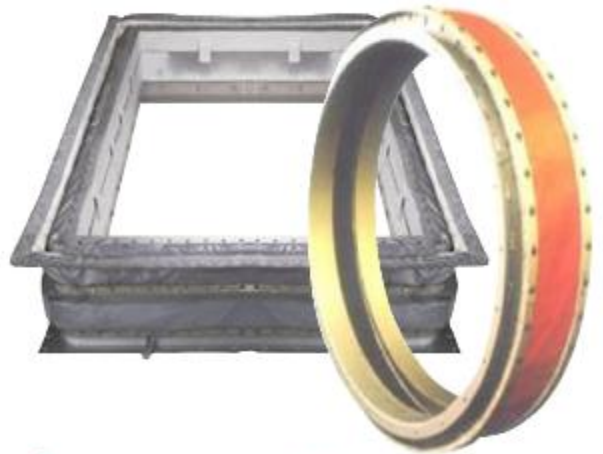
- The Floor Liner is drainable for easy maintenance
- The Exterior Wall is acoustically treated
- The Plenum is designed to be installed with diffuser and turbine rotor in place
- Floating Liner eliminates stress from expansion and contraction
- Cold Flange Design dramatically reduces heat

● INCLUDING GE  
FRAME 3, 5, 6, & 7's



## EXPANSION JOINTS

DRB Industries provides Expansion Joints, Splice Kits, and materials for most Gas Turbine Exhaust Systems Applications. These State of the Art systems dramatically reduce heat transfer because of our wire mesh, fiberglass, superior cloth, ceramic fiber, & fluoropolymer fabrics. We also supply Splice Kits and high temperature, heat sealing (Splicing Irons), seal film, and high strength adhesive (as needed for your Splicing/Installation activities).



**Contact DRB today for a quote**



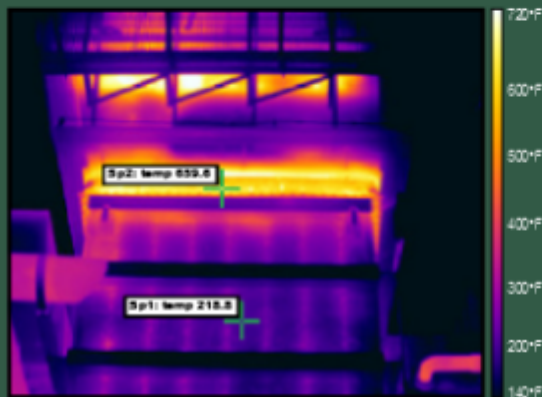
quality . experience . service

Fax: 918.286.7215

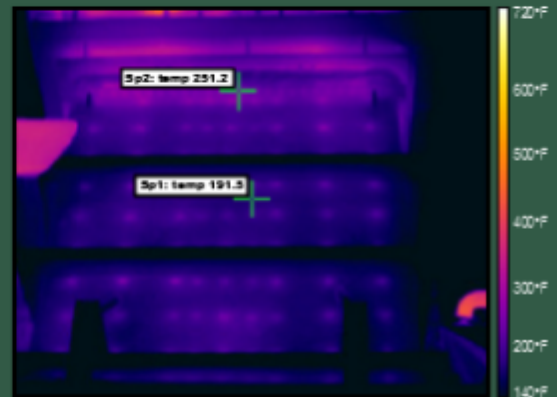
[www.drbindustries.com](http://www.drbindustries.com)

# Most Exhaust Plenums should be replaced one or two times over the lifespan of your Gas Turbine. These before and after thermal images show the improvements expected when you upgrade your exhaust plenum:

Before New Exhaust Installation

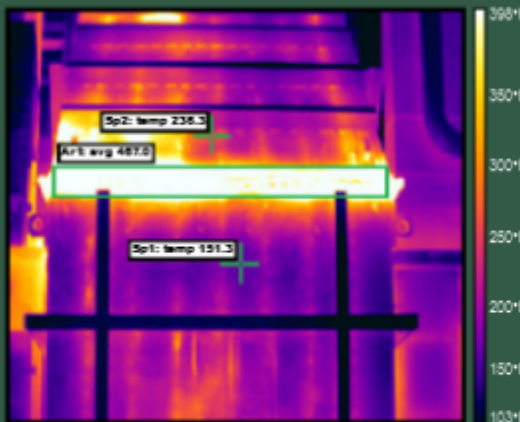


After New Exhaust Installation

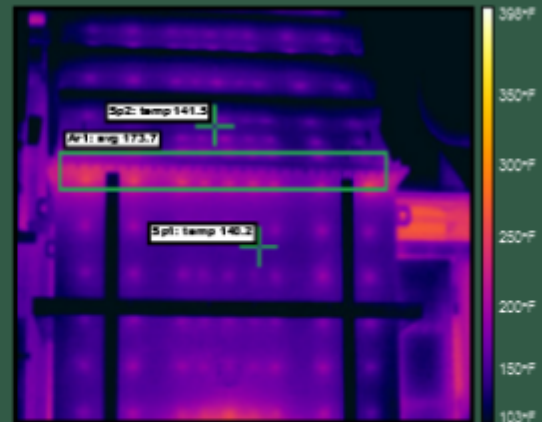


4 Months Later

Before New Exhaust Installation



After New Exhaust Installation



1 Month Later



Phone: 918.286.7176  
Fax: 918.286.7215  
sales@drbindustries.com  
www.drbindustries.com

